

# REGENCY

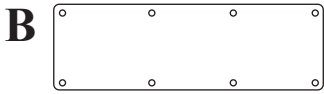
## ML602442BP/ML662442BP/ML722442BP • Kee L-Desk INSTRUCTIONS

You will need 2 people for this assembly.

You will need a Phillips Head Screw Driver and a Tape Measure to Assemble.

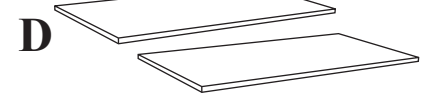
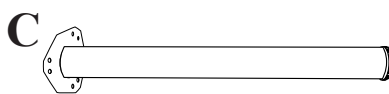
### Hardware :

**A:** Screws(44) • **B:** Flat Bracket



### Parts :

**C:** Legs (6) • **D:** Table Top (sizes may vary)



**STEP 1:** Place **Table Tops(D)** on a clean flat surface with desired table finish face down. Position **Legs (C)** as shown. Then, attach Legs to Table Top using **6 Screws(A)** per Leg.

*Note: Left Return attachment is shown. See Figure 1 for Right Return attachment.*

**STEP 2:** Attach the table tops to one another with the **Flat Bracket(B)** using **8 Screws(A)**.

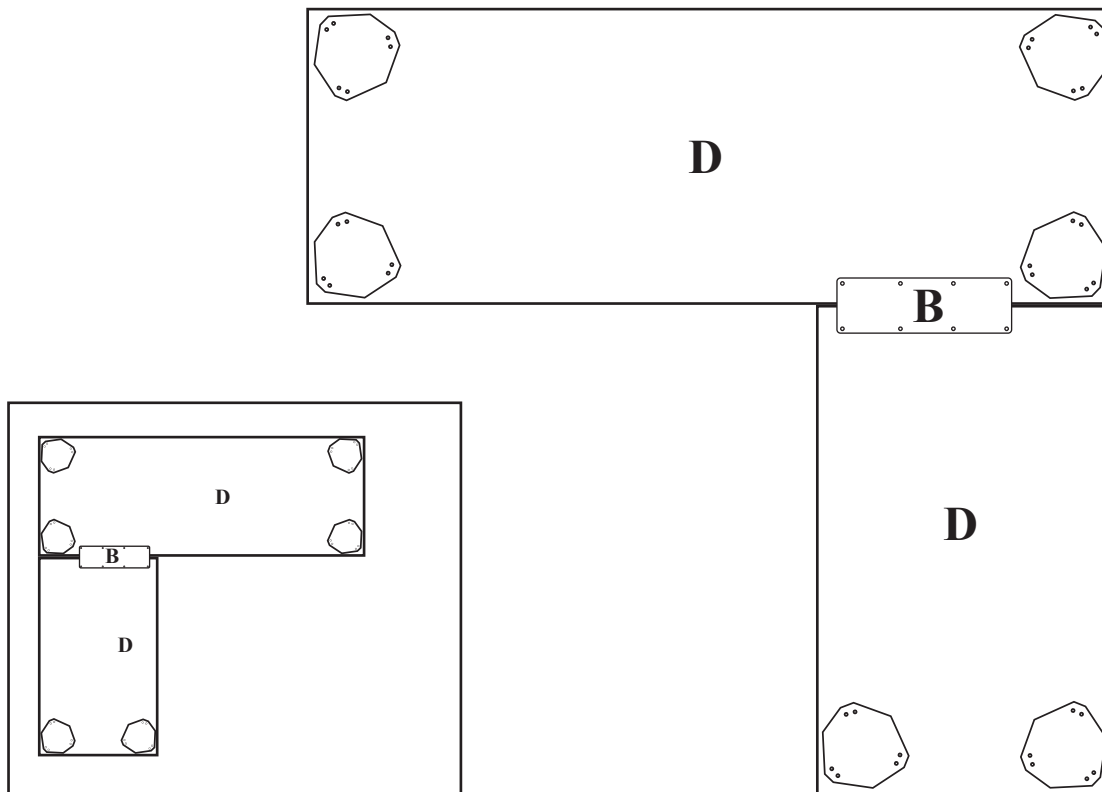


Figure 1. Right Return attachment

**STEP 3:** Using 2 people, gently flip the table over and adjust leveling glides accordingly.

### IMPORTANT NOTICE:

- Place all wooden parts on a clean and smooth surface such as a rug or carpet to avoid scratching the parts.
- Check to be sure that you have all parts and hardware.
- Remove all wrapping materials, including staples & packing straps before you start to assemble.
- Keep all hardware parts and packaging out of reach of children.